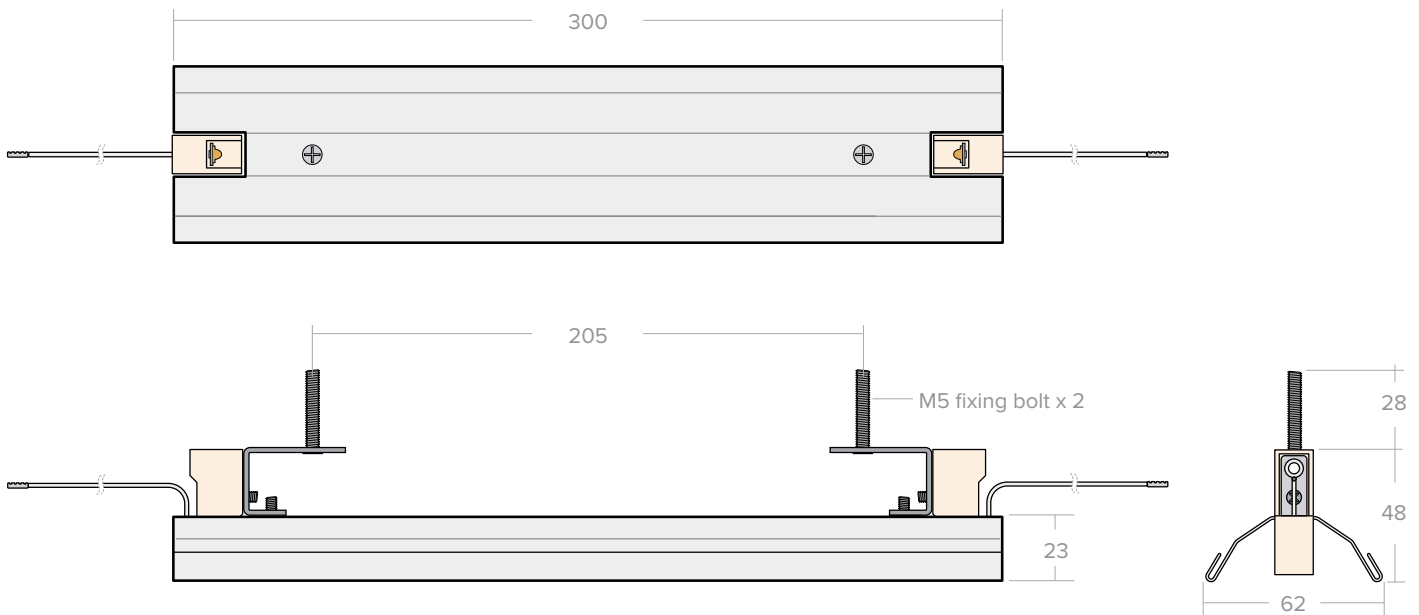
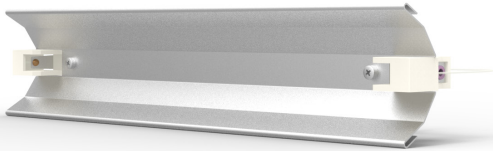


QTMR - Quartz Tungsten Medium Reflector

Designed to cater for QTM/QHM tubes (supplied separately), this polished aluminium clad steel reflector features a highly reflective casing, to maximise heat output. The units can be mounted individually or side-by-side to form IR panels.

Technical specification

Material	0.75 mm Polished aluminium clad steel reflector
Dimensions	300 x 62 x 76 mm
Average weight	263 g
Standards	CE
Assembly	2 x M5 fixing bolts R7s holders with 200mm leads Ø 0.75 mm with PTFE-insulation



QTMR QUARTZ TUNGSTEN MEDIUM REFLECTOR

Suitable for QTM/QHM tubes with R7s terminations.
Tolerances apply, all dimensions mm.
Reflector 0.75 mm polished aluminium coated steel.
200 mm leads Ø 0.75 mm² with PTFE insulation.



23W04